

| Liquid Cooling ESS for C&I Applications |

OmniCube-L233-125K-J



FLEXIBLE AND EXPANDABLE

- Modular design
- Supports multi-machine parallel operation for flexible capacity expansion



INTELLIGENT OPERATION AND MAINTENANCE

- Peak shaving
- Emergency power supply
- Optimal control for power flow



COMPACT DESIGN

- Space-saving installation
- Reduces transportation costs

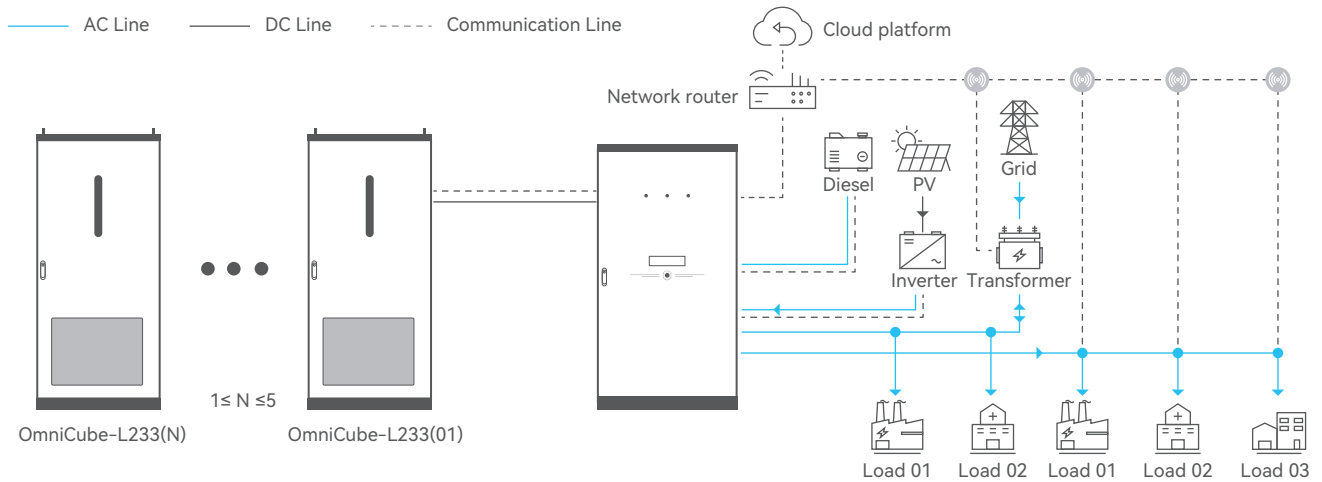


HIGHLY EFFICIENT LIQUID COOLING

- Precise thermal management
- Ensures safe and stable system operation



SYSTEM DIAGRAM



PRODUCT SPECIFICATIONS

Product Type	OmniCube-L233-125K-J-EU
DC	
Cell type	LFP
Rated energy	232.96kWh
Nominal voltage	832V
Battery voltage range	650V ~ 949V
Standard charge/discharge current	140A
Max. charge/discharge current	160A
AC	
Rated output power	125kW
Rated grid voltage	400V
AC connection method	3P3W / 3P4W
Rated grid frequency	50Hz
Max. THD of current	3% (full load)
Power factor	-0.99 ~ 0.99
General Data	
Weight	2.7t
Dimensions (W×D×H)	1000×1350×2350mm
Cooling method	Liquid Cooling
Max. operating altitude	2000m
Operating temperature range	-30 ~ 55°C (>50°C derating)
Relative operating humidity	0% ~ 95% RH
System ingress protection rating	IP55
Communication interface	Ethernet
Communication protocol	Modbus TCP
Fire suppression system	Aerosol
Standard Compliance	
Standard	IEC 62619, IEC 60730, IEC 63056, EN 62477, IEC 61000, UN 38.3, UN 3480, CE1 0-21, CE1 0-16